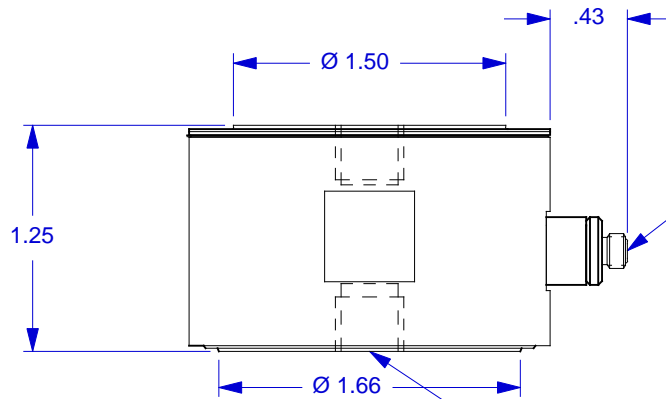


Ø 2.00



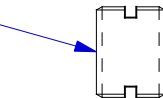
10-32 UNF MICRO COAXIAL CONNECTOR

MODEL 6232 MOUNTING STUD SUPPLIED

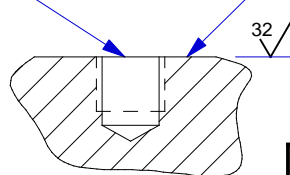
3/8-18 UNC X .300 DEEP MOUNTING HOLE TYP TOP AND BOTTOM

MOUNTING PREPARATION

PREPARE FLAT SURFACE (TO .001 TIR)
 NEXT DRILL 5/16 (Ø.312) X .320 DEEP
 BOTTOM TAP 3/8-18 UNF-2B X .300 MIN
 THREAD DEPTH



MOUNTING SURFACE



CHATSWORTH, CA.

EXCEPTAS OTHERWISE NOTED

ALL DIMENSIONS IN INCHES
 TOLERANCE: .XXX = ± .XX = ±

SURFACE FINISH
 EXCEPTAS NOTED ✓

BREAKEDGES TO DEBURR
 RADIUSOR CHAMFER

THESE DIAS TO T.I.R.

FILLETS - MAX RAD.

SCALE	1X	REV	DATE	ECN
DATE	2/16/96	PART NO.	1061C	
DRAWN	D.Z.	CHECKED	N.C	
APPROVED		NEXT ASSEMBLY	USEDON	

TITLE	DWG NO.
OUTLINE/INSTALLATION DRAWING FORCE SENSOR, MODEL 1061C	127-1061C

SHEET 1 OF 1

1. WEIGHT - 420 GRAMS

SPECIFICATIONS MODEL 1061C CHARGE MODE DYNAMIC FORCE SENSOR

SPECIFICATION	VALUE	UNITS
SENSITIVITY, NOMINAL	-9	pC/Lb
FULL SCALE RANGE, COMPRESSION	25,000	Lbs F
MAXIMUM COMPRESSION	40,000	Lbs F
FULL SCALE RANGE, TENSION	500	Lbs F
MAXIMUM TENSION	1000	Lbs F
RESONANT FREQUENCY, UNLOADED, NOM.	75,000	Hz
STIFFNESS	114	Lb F/In
LINEARITY [1]	+/- 1	%FS
MAX SHOCK, UNLOADED	5000	G's
MAXIMUM VIBRATION, UNLOADED	+/- 3000	G's
COEFFICIENT OF THERMAL SENSITIVITY	.01	%/° F
TEMPERATURE RANGE	-100 to +500	°F
INSULATION RESISTANCE	5.0 x 10 ¹¹	Ohms
CAPACITANCE, NOM.	650	pF
ENVIRONMENTAL SEAL	EPOXY	
CASE MATERIAL	STAINLESS STEEL	17-4 PH
HARDNESS OF MOUNTING SURFACES	Rc 44 to 45	
DIAMETER OF UPPER FORCE-SENSITIVE SURFACE	1.50	INCHES
UPPER ATTACHMENT PROVISION	TAPPED HOLE 3/8-16 x .300 DEEP	
POLARITY OF OUTPUT SIGNAL FOR COMPRESSIVE FORCE INPUT		NEGATIVE
MOUNTING PROVISION, TOP AND BOTTOM	3/8-16 x .300 DEEP TAPPED HOLE	
CONNECTOR	10-32 JACK RADially MOUNTED	
SIZE, HEIGHT x DIAMETER	1.25 x 2.00	INCHES
WEIGHT	420	GRAMS
ACCESSORIES SUPPLIED	(2) MODEL 6232 3/8-16 MOUNTING STUD	

[1] PERCENT FULL SCALE, ZERO-BASED BEST FIT STRAIGHT LINE METHOD.