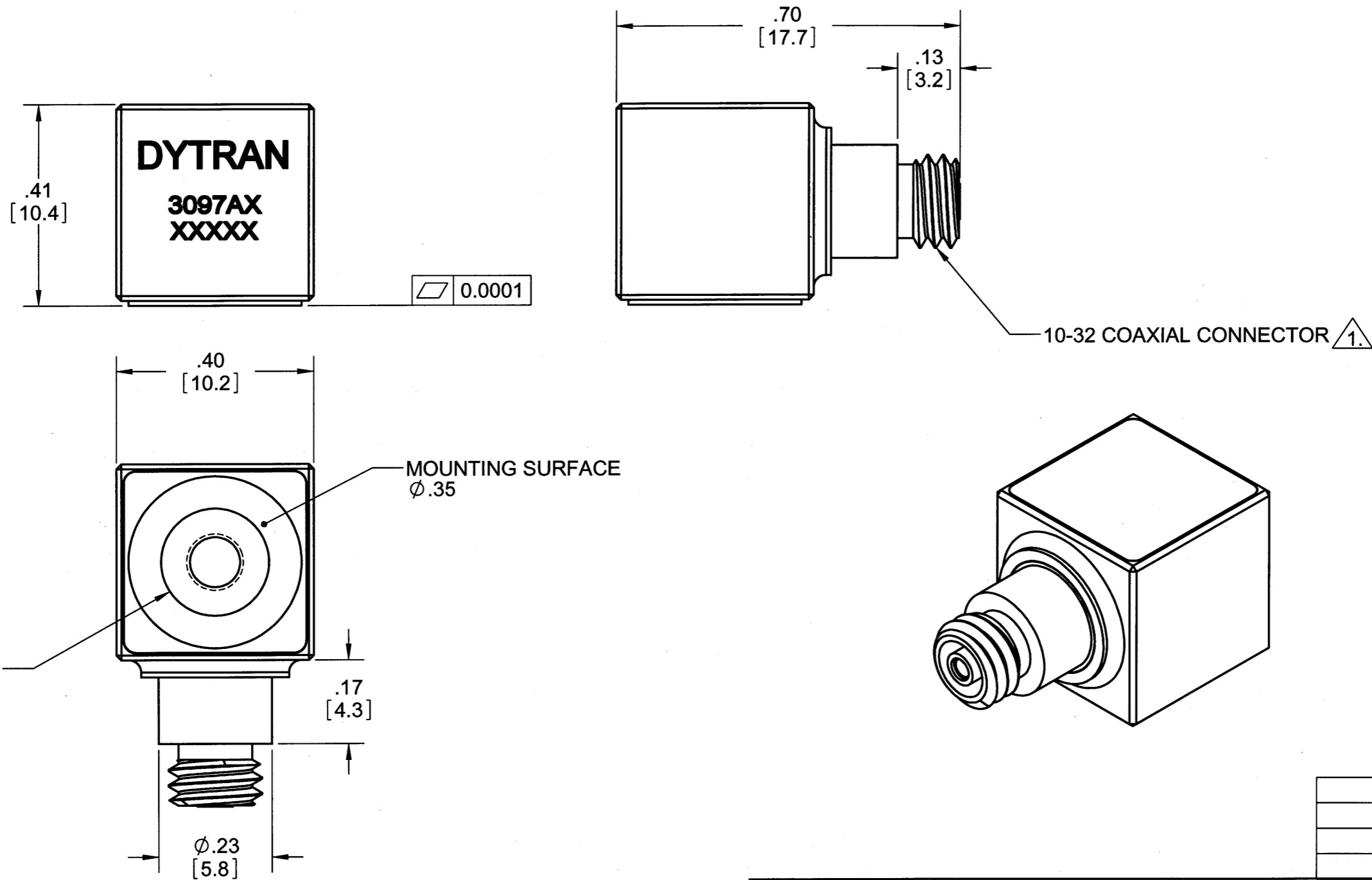


PROPRIETARY AND CONFIDENTIAL

THE INFORMATION CONTAINED IN THIS DRAWING IS THE SOLE PROPERTY OF DYTRAN INSTRUMENTS INC. ANY REPRODUCTION IN PART OR AS A WHOLE WITHOUT THE WRITTEN PERMISSION OF DYTRAN INSTRUMENTS INC IS PROHIBITED.

REVISIONS

REV.	ECN	DESCRIPTION	BY/DATE	CHK	APPR
A	5131	INITIAL RELEASE	05/14/08	CEJ	DV



MODEL	SENSITIVITY
3097A3	500mV/g
3097A2	100mV/g
3097A1	10mV/g

- NOTES:
- 2. MOUNTING STUD 6728 (5-40 TO M6X1) SUPPLIED
 - 1. MATES WITH DYTRAN 6117 CONNECTOR

DRILL HOLE SIZE	TOLERANCE
.0135 THRU .125	+004 / -.001
.1260 THRU .250	+005 / -.001
.2510 THRU .500	+006 / -.001
.5010 THRU .750	+008 / -.001
.7510 THRU 1.000	+010 / -.001
1.001 THRU 2.000	+012 / -.001

UNLESS OTHERWISE SPECIFIED:
 INTERPRET DIM & TOL PER ASME Y14.5M - 1994.
 REMOVE BURRS.
 COUNTERSINK INTERNAL THDS 90° TO MAJOR DIA.
 CHAM EXT THDS 45° TO MINOR DIA.
 THD LENGTHS AND DEPTHS ARE FOR MIN FULL THDS.
 THDS PER MIL-S-7742.
 DIMENSIONS APPLY AFTER FINISHING

THIRD ANGLE PROJECTION
 USA

ALL MACHINED SURFACES:
 TOTAL RUNOUT WITHIN .005.
 BREAK SHARP EDGES .005 TO .010.
 MACHINED FILLET RADII .005 TO .015.
 WELDING SYMBOLS PER AWS A2.4.
 ABBREVIATIONS PER MIL-STD-12.

UNLESS OTHERWISE SPECIFIED:
 DIMENSIONS ARE IN INCHES.
 TOLERANCES ARE:

DECIMALS	ANGLES
.XX ± .010	± 1°
.XXX ± .005	

CONTRACT NO.

APPROVALS	DATE
ORIG DV	05/14/08
CHK CEJ	5-21-8
APP DV	5/21/08
APP	

MATERIAL:

FINISH:

DO NOT SCALE DRAWING

DYTRAN INSTRUMENTS, INC. Chatsworth, CA

MASTER ONLY IF IN RED

TITLE: **OUTLINE DRAWING MODEL 3097A**

SIZE B	CAGE CODE 2W033	DWG NO 127-3097A	REV A
--------	-----------------	------------------	-------

SCALE: 4:1 SOLIDWORKS SHEET 1 of 1



**SPECIFICATIONS
MODEL SERIES 3097A IEPE ACCELEROMETERS**

SPECIFICATION	VALUE			UNITS
PHYSICAL				
WEIGHT	4.0			grams
SIZE, SQUARE x HEIGHT	.40 x .40 x 0.41			inches
MOUNTING PROVISION	5-40 UNC-2B, 0.140 DEEP TAPPED HOLE			
CONNECTOR, SIDE MOUNTED	10-32 Coaxial			
MATERIAL, BASE, CAP & CONNECTOR	TITANIUM			
SEISMIC ELEMENT TYPE	CERAMIC, PLANAR SHEAR			
		MODELS		
	3097A1	3097A2	3097A3	
PERFORMANCE				
SENSITIVITY, ± 5% [1]	10	100	500	mV/g
RANGE F.S. FOR ± 5 VOLTS OUTPUT	± 500	±50	±10	g's
FREQUENCY RANGE, ± 5% (all models)		0.3 to 10,000		Hz
RESONANT FREQUENCY, NOM. (all models)		40		kHz
EQUIVALENT ELECTRICAL NOISE	.0005	.0001	.0002	grms
PHASE RESPONSE (±5°)		1 to 3,000		Hz
LINEARITY [2] (all models)		<1		% F.S.
TRANSVERSE SENSITIVITY, MAX. (all models)		<5		%
BASE STRAIN SENSITIVITY		0.002		g's/μσ
ENVIRONMENTAL				
MAXIMUM VIBRATION/SHOCK	600/5000	400/5000	200/5000	± gpk
TEMPERATURE RANGE	-60 to +200	-60 to +180	-60 to +150	°F
SEAL, HERMETIC	Glass-to-metal/welded			
COEFFICIENT OF THERMAL SENSITIVITY		.06		%/°F
ELECTRICAL				
SUPPLY CURRENT [3]		2 to 20		mA
COMPLIANCE VOLTAGE RANGE		18 to +30		Volts
OUTPUT IMPEDANCE, TYP.		100		Ω
BIAS VOLTAGE		+11 to +13		VDC
DISCHARGE TIME CONSTANT, NOM.		2.0 – 2.2		Sec
OUTPUT SIGNAL POLARITY		Positive		
FOR ACCELERATION TOWARD TOP				

Accessories supplied: (1) Model 6728 mounting stud (5-40 TO M6X1).

[1] Measured at 100 Hz, 1 grms per ISA RP 37.2.

[2] Measured using zero-based best straight line method, % of F.S. or any lesser range.

[3] Do not apply power to this device without current limiting, 20 mA MAX. To do so will destroy the integral IC amplifier.