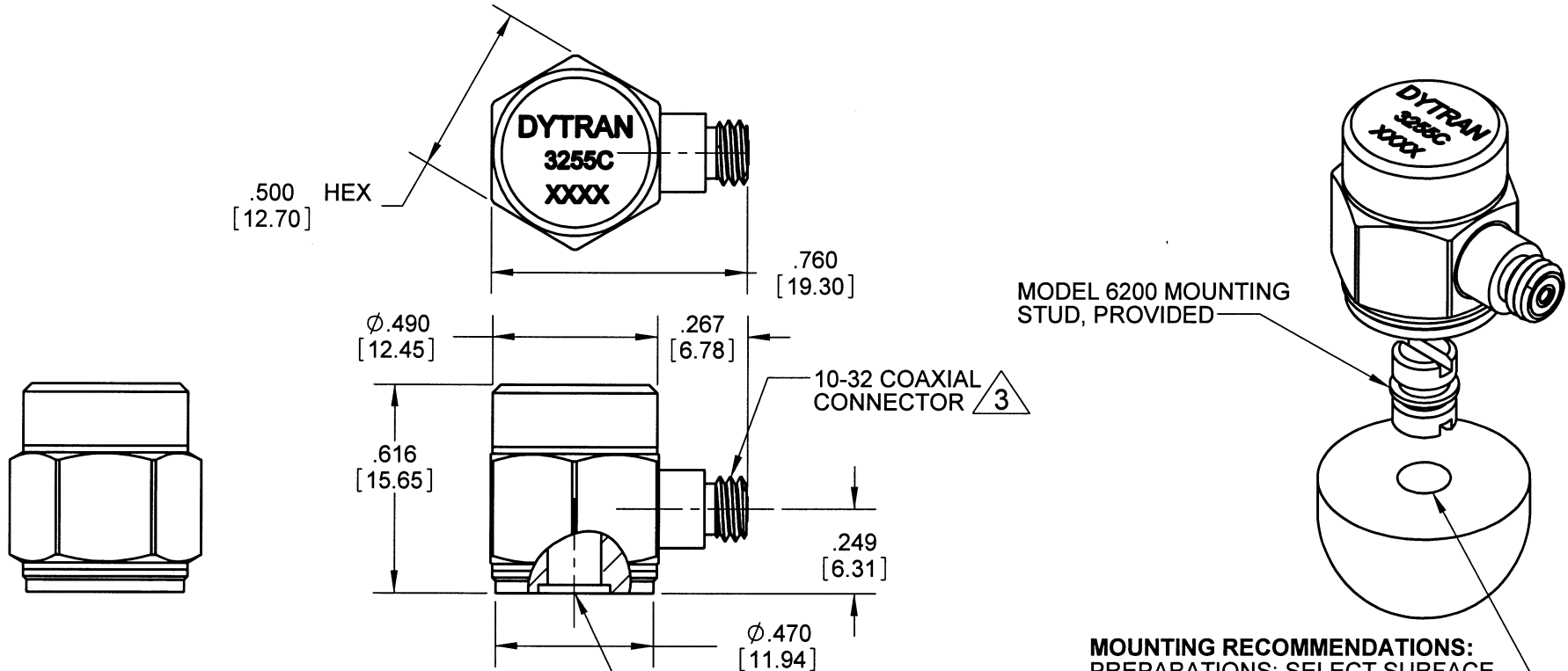


PROPRIETARY AND CONFIDENTIAL

REVISIONS

THE INFORMATION CONTAINED IN THIS DRAWING IS THE SOLE PROPERTY OF DYTRAN INSTRUMENTS INC. ANY REPRODUCTION IN PART OR AS A WHOLE WITHOUT THE WRITTEN PERMISSION OF DYTRAN INSTRUMENTS, INC. IS PROHIBITED

REV.	ECN	DESCRIPTION	BY/DATE	CHK	APPR
B	6230	SEE ECN	JS 09/10/09	RA	AWS



MODEL 6200 MOUNTING STUD, PROVIDED


MOUNTING RECOMMENDATIONS:
 PREPARATIONS: SELECT SURFACE FLAT TO .001 TIR TAP
 10-32 UNF-2B X .200 MIN THD DEPTH.
 RECOMMENDED TORQUE: 10-12 LB-IN

- 3 MATES WITH 6013AXX, 6019AXX
 - 2. MATERIAL: TITANIUM
 - 1. WEIGHT: 10 GRAMS APPROXIMATELY
- NOTES: UNLESS OTHERWISE SPECIFIED.

UNLESS OTHERWISE SPECIFIED: INTERPRET DIM & TOL PER ASME Y14.5M - 1994. REMOVE BURRS. COUNTERSINK INTERNAL THDS 90° TO MAJOR DIA. CHAM EXT THDS 45° TO MINOR DIA. THD LENGTHS AND DEPTHS ARE FOR MIN FULL THDS. THDS PER MIL-S-7742. DIMENSIONS APPLY AFTER FINISHING. ALL MACHINED SURFACES. TOTAL RUNOUT WITHIN .005. BREAK SHARP EDGES .005 TO .010. MACHINED FILLET RADII .005 TO .015. WELDING SYMBOLS PER AWS A2.4. ABBREVIATIONS PER MIL-STD-12.	
3255C	USED ON
	NEXT ASSY
APPLICATION	
THIRD ANGLE PROJECTION USA	

UNLESS OTHERWISE SPECIFIED: DIMENSIONS ARE IN INCHES. DIMENSIONS IN BRACKETS [] ARE IN MILLIMETERS TOLERANCES ARE: INCHES METRIC ANGLES .XX ± .03 .X ± 0.8 ± 1° .XXX ± .010 .XX ± 0.25		
MATERIAL		
FINISH		
DO NOT SCALE DRAWING		

CONTRACT NO.		
APPROVALS		DATE
ORIG	RA	01/05/09
CHK	JS	01/07/09
APP	DV	01/07/09
APP		



MASTER COPY ONLY IF IN RED

Chatsworth, CA

TITLE: **OUTLINE/INSTALLATION, DRAWING, 3255C**

SIZE A	CAGE CODE 2W033	DWG. NO. 127-3255C	REV B
SCALE: 2:1	SOLIDWORKS	SHEET 1 OF 1	

MODEL NUMBER 3255C	PERFORMANCE SPECIFICATION	DOC NO. PS3255C
-------------------------------------	----------------------------------	----------------------------------

Accelerometer, Charge Mode

REV A, ECN 5676, 12/22/08



- **HERMETICALLY SEALED**
- **HIGH CHARGE OUTPUT**
- **ROBUST DESIGN**

ENGLISH	SI
---------	----

PHYSICAL

Weight		0.35	oz		10.0	grams
Mounting Internal Thread		10-32 UNF-2B			10-32 UNF-2B	
Connector [1]	Type	Coaxial			Coaxial	
Housing	Material	Titanium			Titanium	
	Material	Titanium			Titanium	
Isolation	Material	Case Grounded			Case Grounded	
	Material	Ceramic			Ceramic	
Sensing Element	Mode	Shear			Shear	

PERFORMANCE

Sensitivity, ± 15% [2]		15	pC/g		1.53	pC/m/s ²
Acceleration Range [3]		[3]	Gpeak		[3]	m/s ² peak
Frequency Range		[5]-5000	Hz		[5]-5000	Hz
Resonance Frequency		32	kHz		32	kHz
Linearity [4]		±1	%		±1	%
Transverse Sensitivity Max		5	%		5	%

ENVIRONMENTAL

Shock Max		3000	g pk		29430	m/s ²
Vibration Max		600	g pk		5886	m/s ²
Operating Temperature		-60 to +375	°F		-51 to +190	°C
Seal		Hermetic			Hermetic	
Magnetic Sensitivity at 100 Gauss		0.00007	g/Gauss		0.0006867	m/s ² /Gauss
Base Strain Sensitivity		0.05	g/με		0.4905	m/s ² /με

ELECTRICAL

Capacitance, nom		975	pF		975	pF
------------------	--	-----	----	--	-----	----

This family also includes:

Model	Sensitivity (pC/g)	Range (Gpeak)	Resolution (Grms)	Oper. Temp(°F)

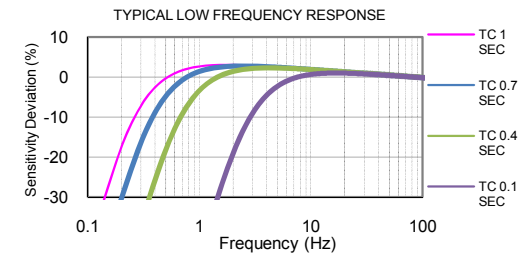
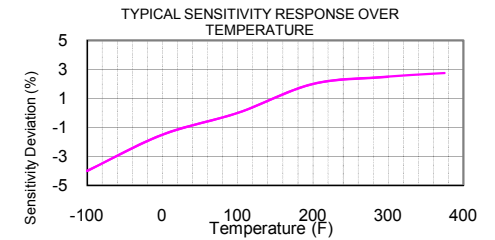
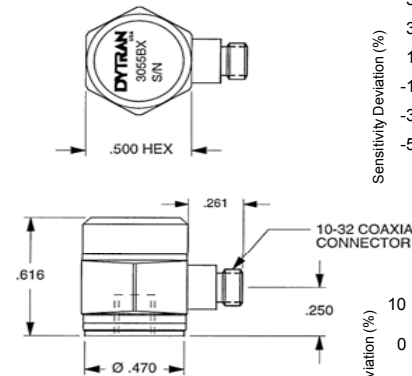
Please, refer to the performance specifications of the products in this family for detailed description

Supplied Accessories:

- 1) Model 6200 Mounting Stud
- 2) Accredited Calibration Certificate (ISO 17025)

Notes:

- [1] Mates with Dytran cable Model 6013AXX or 6019AXX(XX= Length in feet).
- [2] Measured At 100 Hz, 1 Grms per ISA RP 37.2
- [3] Depends On the Gain Setting Of The Charge Amplifier Used
- [4] Measured using zero-based best straight line method, % of F.S. or any lesser calibrated range.
- [5] Low Frequency Response Is the Function Of the Discharge Time Constant Of The Charge Amplifier Used. Please, Refer To The Plot Below For Frequency Response For Different Time Constants



Units on the line drawing are in inches, units in brackets are in millimeters. Refer to 127-3055B1 for more



21592 Marilla Street, Chatsworth, California 91311 Phone: 818.700.7818 Fax:818.700.7880