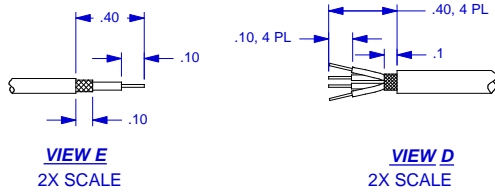


MODEL	REV	DATE	ECN	LENGTH 'L'
6801A20	-	-	-	20 ft. +1.0/-00 in.
6801AXX	-	-	-	XX ft. +1.0/-00 in.

8" LONG, 3 COAXIAL WIRES

AXIS 1
JOIN WITH
BLACK WIRE



120-0048-01
CONNECTOR ASSEMBLY,
3 PLACES

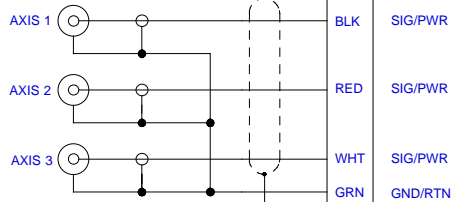
145-0048-01 SHRINK TUBING,
CLEAR, 3 PL

USE KROY LABEL, SIZE (1/8)
MARK AS SHOWN, 3 PL

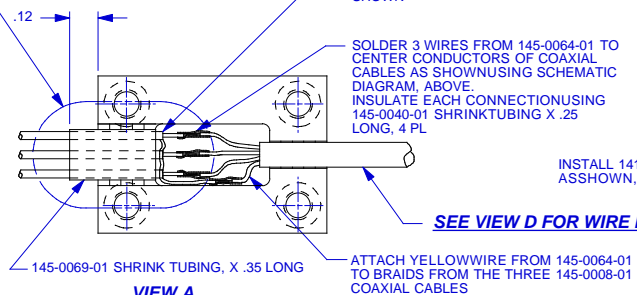
AXIS 2 JOIN WITH RED WIRE

AXIS 3
JOIN WITH
WHITE WIRE

145-0008-01
COAXIAL CABLE,
(TEFLON), 3 PLACES



SEE VIEW E FOR WIRE PREPARATION



WIRELIST	
FROM 120-0010-01	TO
SIG/PWR - BLK	AXIS - 1
SIG/PWR - RED	AXIS - 2
SIG/PWR - WHT	AXIS - 3
GNDRTN - GRN	COAX - GND

SOLDER WIRE BRAIDS TOGETHER AND
GROUND TO YEL WIRE OF 145-0064-01 AS
SHOWN

SOLDER 3 WIRES FROM 145-0064-01 TO
CENTER CONDUCTORS OF COAXIAL
CABLES AS SHOWN USING SCHEMATIC
DIAGRAM, ABOVE.
INSULATE EACH CONNECTION USING
145-0040-01 SHRINK TUBING X .25
LONG, 4 PL

ATTACH YELLOW WIRE FROM 145-0064-01
TO BRAIDS FROM THE THREE 145-0008-01
COAXIAL CABLES

SEE VIEW D FOR WIRE PREPARATION

EXCEPT AS OTHERWISE NOTED

ALL DIMENSIONS IN INCHES
TOLERANCE: .XX ± .025

SURFACE FINISH:
EXCEPT AS NOTED ✓

BREAK EDGES TO DEBURR
RADIUS OR CHAMFER

THESE DIAS (C) TO T.I.R.

FILLET - MAX RAD.

(1.00 MAX)

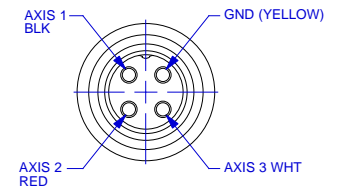
"XX"=LENGTH IN FEET

B

B

C

C



SEE VIEW A

107-1262-01 SPLICE,
UPPER

107-1262-02 SPLICE,
LOWER

INSTALL 141-0117-01 SCREW,
AS SHOWN, 4 REQD

VIEW B-B

INSTALL 141-0116-01 WASHER,
AS SHOWN, 4 REQD

LIGHTLY PRESS 141-0106-01
INSERT INTO (107-1262-02)
AS SHOWN, 4 REQD

DIYTRAN
INSTRUMENTS, INC.

CHATSWORTH, CA.

SCALE	REV	DATE	ECN
1X	-	-	-
DATE	7/30/01	PART NO.	MODEL 6430AXX
DRAWN	R.A.	CHECKED	N.C.
APPROVED		NEXT ASSEMBLY	USED ON 6430
TITLE			DWG NO.
CABLE ASSEMBLY, MINI 4 PIN, TO (3) BNC, MODEL 6801A			128-6801A
			SHEET 1 OF 1