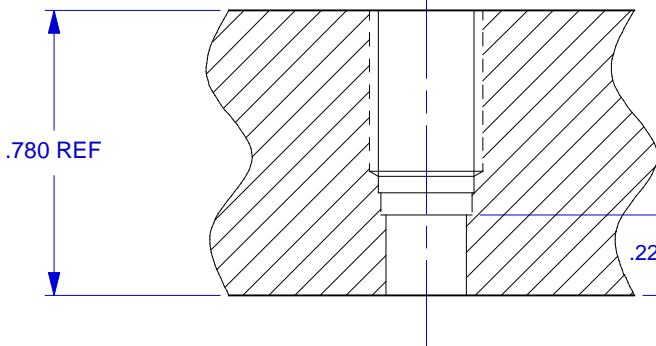
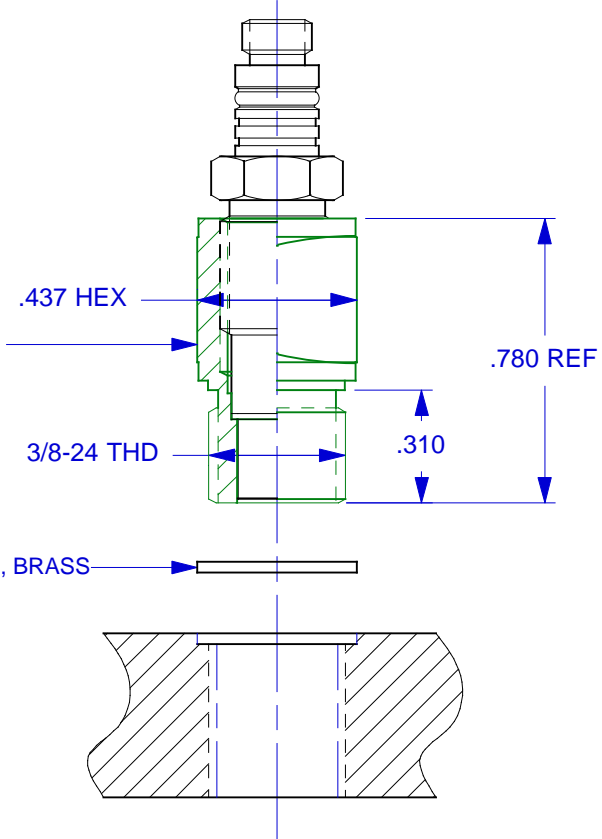


MODEL 6502 ADAPTOR SHOWN WITH 2200C PROBE INSTALLED



- PORT PREPARATION INSTRUCTIONS, 2200C**
1. DRILL AND REAM  $\text{Ø} .221 +.001/- .000$  THRU
  2. C'BORE (OR END CUTTING REAM)  $1/4 (\text{Ø} .250)$  X  $.560$  DEEP
  3. C"DRILL  $\text{Ø} .272 +.003/- .001$  X  $.500$  DEEP
  4. BOTTOM TAP  $5/15-24 \text{ UNF-2B}$  X  $.440$  MIN DEPTH

- PORT PREPARATION INSTRUCTIONS, 6502**
1. DRILL Q ( $\text{Ø} .332$ ) THRU (OR  $.450$  MIN DEPTH)
  2. TAP  $3/8-24 \text{ UNF-2B}$  X  $.350$  MIN DEPTH
  3. C'BORE  $\text{Ø} .437 +.003/- .000$  X  $.030$  DEEP

2. MOUNTING TORQUE FOR 6502 ADAPTOR: 50-60 LB-INCHES.

1. MOUNTING TORQUE FOR 2200C PROBE: 30 LB-INCHES.

<b>DIYTRAN</b> INSTRUMENTS, INC.		CHATSORTH, CA.	
SCALE 2X	REV -	DATE -	ECN -
DATE 1/22/04	PART NO.		
DRAWN R.A.	CHECKED N.C.	MAT'L	
APPROVED	NEXT ASSEMBLY		USED ON
TITLE <b>OUTLINE/INSTALLATION DRAWING, MODEL 2200C</b>			DWG NO. <b>127-2200C</b>
			SHEET 1 OF 1

## SPECIFICATIONS

### MODEL SERIES 2200C ACCELERATION COMPENSATED CHARGE MODE PRESSURE SENSORS

SPECIFICATION			UNITS
			VALUE
SENSITIVITY, NOM. (ALL MODELS)			1.0 pC/PSI
	<u>RANGE, F.S.</u>	<u>MAXIMUM PRESSURE</u>	
	MODEL 2200C7	15,000	15,000 PSI
	MODEL 2200C6	10,000	15,000 PSI
	MODEL 2200C5	5,000	10,000 PSI
	MODEL 2200C4	1,000	10,000 PSI
	MODEL 2200C2	500	10,000 PSI
	MODEL 2200C1	100	10,000 PSI
RESONANT FREQUENCY			250 kHz
RISE TIME, NOM.			2 μSEC
ACCELERATION SENSITIVITY, AXIAL DIRECTION			.002 PSI/G
LINEARITY [1]			1 %F.S.
TEMPERATURE RANGE [2]			-100 to +500 °F
COEFFICIENT OF THERMAL SENSITIVITY			.01 %/°F
MAXIMUM SHOCK			10,000 G
MAXIMUM VIBRATION			+/- 2500 G
MATERIAL, BODY/DIAPHRAGM	17-4 PH/316L	STAINLESS STEEL	
ELECTRICAL CONNECTOR	10-32	COAXIAL	
ENVIRONMENTAL SEAL	EPOXY		
WEIGHT	7		GRAMS
ACCESSORIES SUPPLIED	(2) MODEL 6600 SEAL, BRASS		

[1] Over any calibrated full scale range within rated full scale. Zero-based best fit straight line method.

[2] Maximum flash temperature, short duration (as in pyroshock event), 3000°F.